



**for**  
**HTC Thunderbolt**  
**Model #: AP1509THB**

# User's Manual

## SPECIFICATIONS:

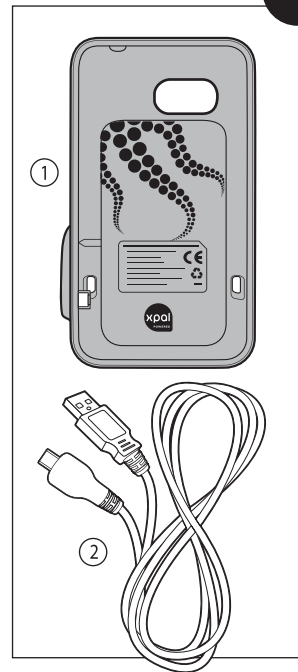
Power Capacity: 1500 mAh  
Battery Cell: Lithium Polymer  
Rated Input: 5V, 1A  
Rated Output: 5V, 1A  
Dimensions: 5.0L x 2.99W x 0.93H in  
Weight: 0.17 lbs

## SPÉCIFICATIONS TECHNIQUES:

Capacité d'alimentation: 1500 mAh  
Pile bouton: Lithium-polymère  
Tension nominale: 5 V CC, 1A  
Puissance de sortie: 5 V CC, 1A  
Dimensions: 12,8L x 7,6W x 2,4H cm  
Poids: 77,1 g

**Includes  
Inclut**

**AP1509THB**



[www.power-skin.com](http://www.power-skin.com)



[www.power-skin.com](http://www.power-skin.com)

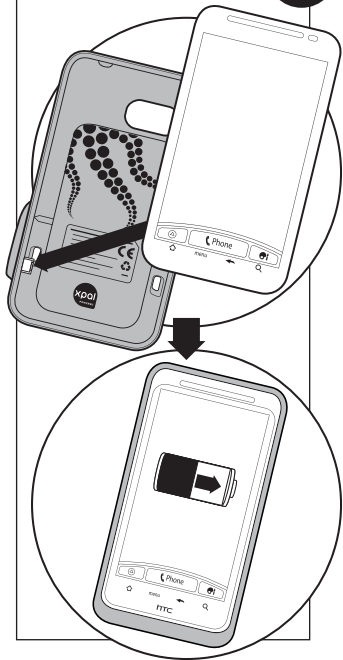
Handset sold separately. Copyright ©2011 HTC Corporation.  
All rights reserved. The HTC logo, HTC ThunderBolt are trademarks  
and/or service marks of HTC Corporation.

©2011 XPAL Power Corporation. All rights reserved. The XPAL Power  
logo, charge on! logo, octopus graphic, tentacle graphic, XPAL  
Power, and PowerSkin are trademarks and/or service marks of XPAL  
Power and TennRich International Corporation. All other  
trademarks, brand names or product names are the property of  
their respective owners and are not affiliated with XPAL Power and  
or TennRich International Corporation.

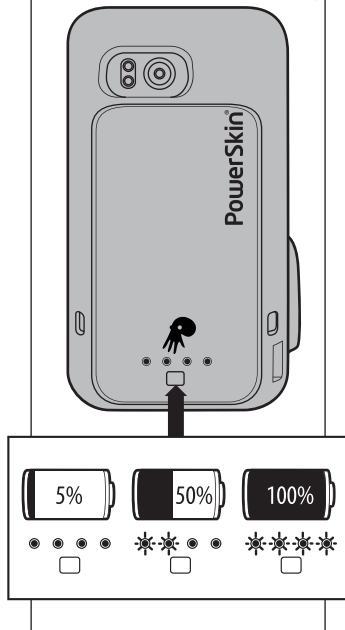
Combiné vendu séparément. Copyright ©2011 HTC Corporation. Tous  
droits réservés. HTC logo, HTC ThunderBolt, sont les marques déposées  
et/ou les marques de service de HTC Corporation.

©2011 XPAL Power Corporation. Tous droits réservés.  
XPAL Power logo, charge on! logo, octopus graphic, tentacle graphic,  
XPAL Power et PowerSkin sont les marques commerciale et/ou les  
marques de service de XPAL Power et TennRich International Corporation.  
L'ensemble des autres marques commerciales ou noms de produits sont  
la propriété de leurs propriétaires respectifs et ne sont pas affiliés à XPAL  
Power et TennRich International Corporation.

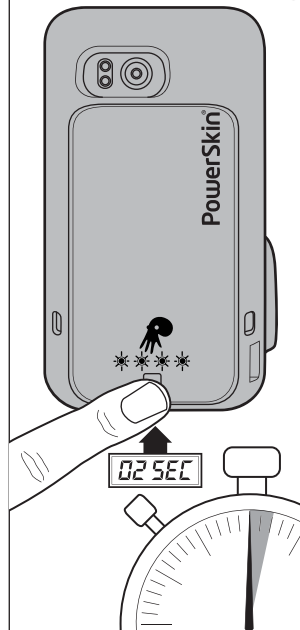
## How to Use Utilisation



## Battery Check Bouton d'état de charge



## Power on /off Marche / Arrêt



## How to Recharge Pour Recharger

