



for
Motorola Droid X
Model #: AP1503MDX

User's Manual

SPECIFICATIONS:

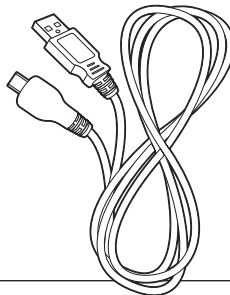
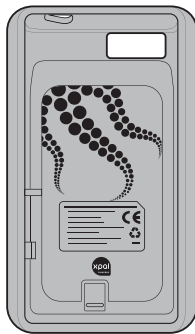
Power Capacity: 1500 mAh
Battery Cell: Lithium Polymer
Rated Input: 5V, 1A
Rated Output: 5V, 1A
Dimensions: 5.18L x 3.03W x 0.77H in
Weight: 0.18 lbs

SPÉCIFICATIONS TECHNIQUES:

Capacité d'alimentation: 1500 mAh
Pile bouton: Lithium-polymère
Tension nominale: 5 V CC, 1A
Puissance de sortie: 5 V CC, 1A
Dimensions: 13,2L x 7,7W x 1,96H cm
Poids: 81,6 g

**Includes
Inclut**

AP1503MDX



www.power-skin.com



www.power-skin.com

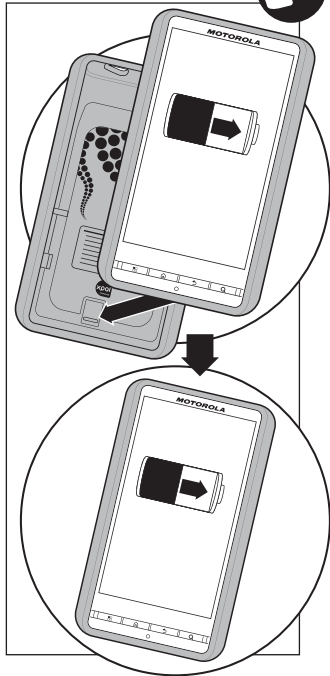
Handset sold separately. MOTOROLA, Motorola Droid X and the Stylized M Logo are trademarks or registered trademarks of Motorola Trademark Holdings, LLC. All other product and service names are the property of their respective owners
©2011 Motorola Mobility, Inc.

©2011 XPAL Power Corporation. All rights reserved. The XPAL Powered logo, charge on! logo, octopus graphic, tentacle graphic, XPAL Powered, and PowerSkin are trademarks and/or service marks of XPAL Power and TennRich International Corporation. All other trademarks, brand names or product names are the property of their respective owners and are not affiliated with XPAL Power and or TennRich International Corporation.

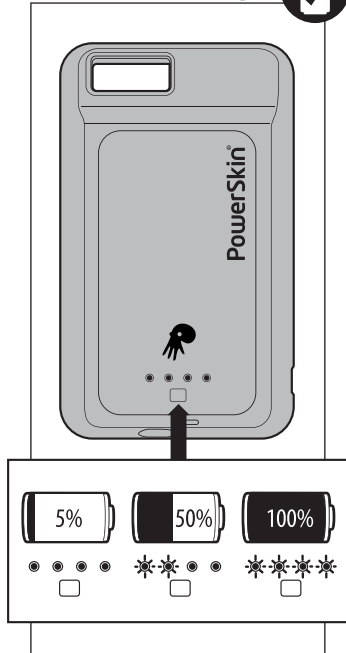
Combiné vendu séparément. MOTOROLA, Motorola Droid X et M Logo sont les marques commerciale ou les marques déposées de Motorola Trademark Holdings, LLC. L'ensemble des autres marques commerciales ou noms de produits sont la propriété de leurs propriétaires respectifs
©2011 Motorola Mobility, Inc.

©2011 XPAL Power Corporation. Tous droits réservés. XPAL Powered logo, charge on! logo, octopus graphic, tentacle graphic, XPAL Powered et PowerSkin sont les marques commerciale et/ou les marques de service de XPAL Power et TennRich International Corporation. L'ensemble des autres marques commerciales ou noms de produits sont la propriété de leurs propriétaires respectifs et ne sont pas affiliés à XPAL Power et TennRich International Corporation.

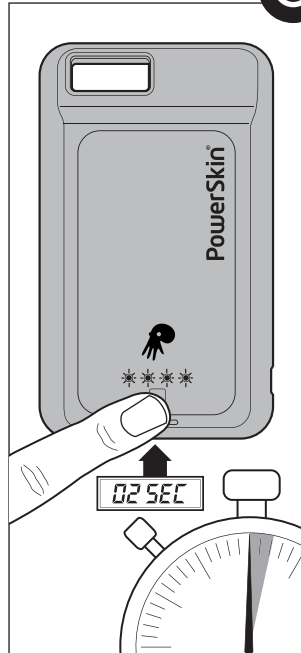
How to Use Utilisation



Battery Check Bouton d'état de charge



Power on/off sous tension / hors tension



How to Recharge Pour Recharger

