



for  
**HTC HD7**  
Model #: AP1502HD7

# User's Manual

## SPECIFICATIONS:

Power Capacity: 1500 mAh  
Battery Cell: Lithium Polymer  
Rated Input: 5V, 1A  
Rated Output: 5V, 0.8A  
Dimensions: 5.32L x 2.84W x 0.84H in  
Weight: 0.17 lbs

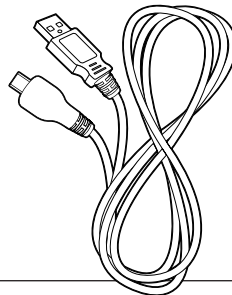
## SPÉCIFICATIONS TECHNIQUES:

Capacité d'alimentation: 1500 mAh  
Pile bouton: Lithium-polymère  
Tension nominale: 5 V CC, 1A  
Puissance de sortie: 5 V CC, 800 mA  
Dimensions: 13,5L x 7,2W x 2,1H cm  
Poids: 77,1 g

**Includes  
Inclut**

AP1502HD7

①



[www.power-skin.com](http://www.power-skin.com)



[www.power-skin.com](http://www.power-skin.com)

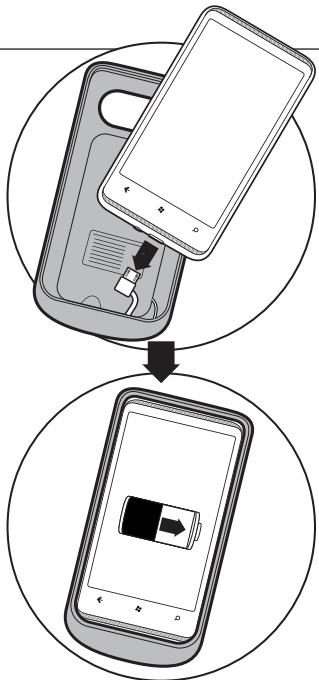
Handset sold separately. Copyright ©2011 HTC Corporation. All rights reserved. The HTC logo, HTC HD7, are trademarks and/or service marks of HTC Corporation.

©2011 XPAL Power Corporation. All rights reserved. The XPAL Powered logo, charge on! logo, octopus graphic, tentacle graphic, XPAL Powered, and PowerSkin are trademarks and/or service marks of XPAL Power and TennRich International Corporation. All other trademarks, brand names or product names are the property of their respective owners and are not affiliated with XPAL Power and or TennRich International Corporation.

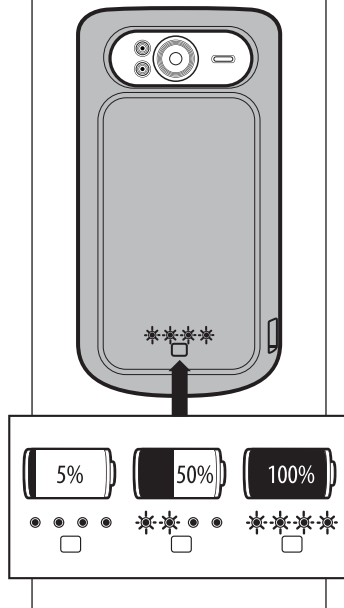
Combiné vendu séparément. Copyright ©2011 HTC Corporation. Tous droits réservés. HTC logo, HTC HD7, sont les marques déposées et/ou les marques de service de HTC Corporation.

©2011 XPAL Power Corporation. Tous droits réservés. XPAL Powered logo, charge on! logo, octopus graphic, tentacle graphic, XPAL Powered et PowerSkin sont les marques commerciale et/ou les marques de service de XPAL Power et TennRich International Corporation. L'ensemble des autres marques commerciales ou noms de produits sont la propriété de leurs propriétaires respectifs et ne sont pas affiliés à XPAL Power et TennRich International Corporation.

## How to Use Utilisation



## Battery Check Bouton d'état de charge



## How to Recharge Pour Recharger

